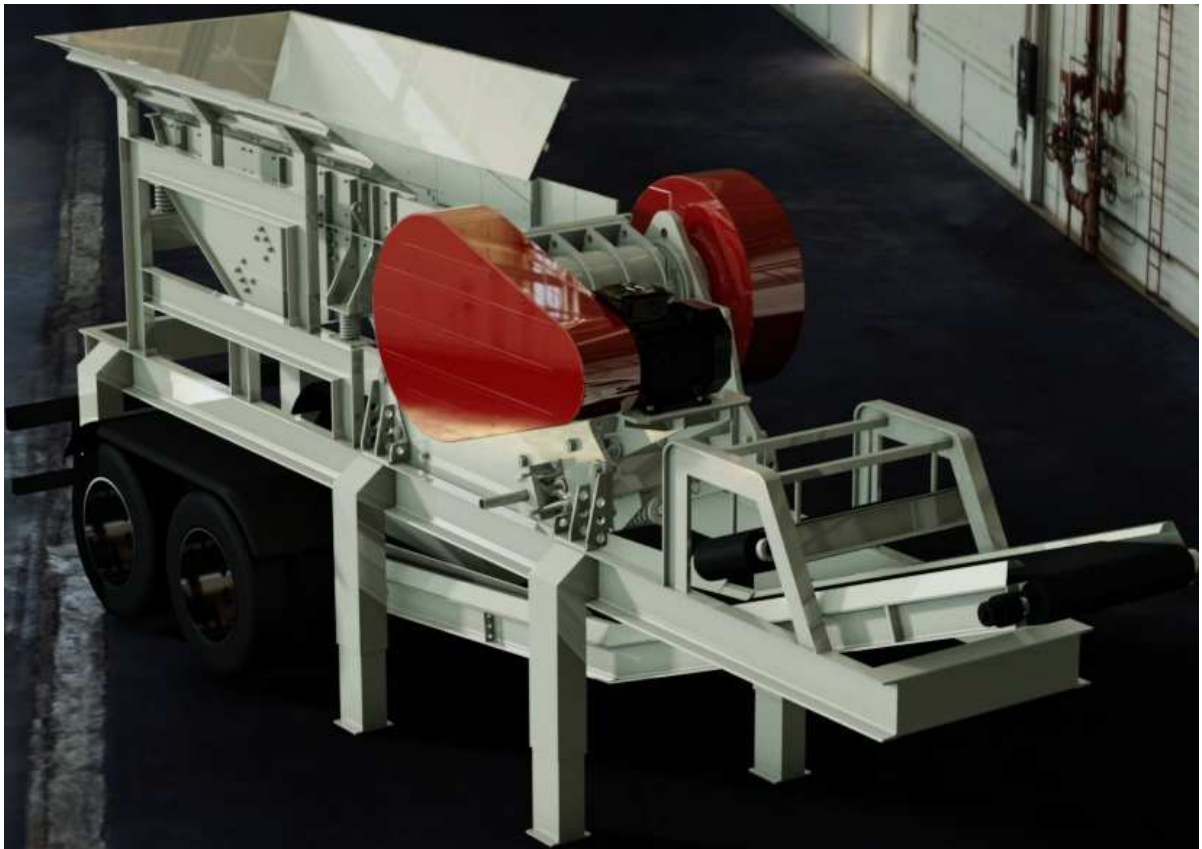


MOBILE UNITS WITH JAW CRUSHERS GJW SERIES

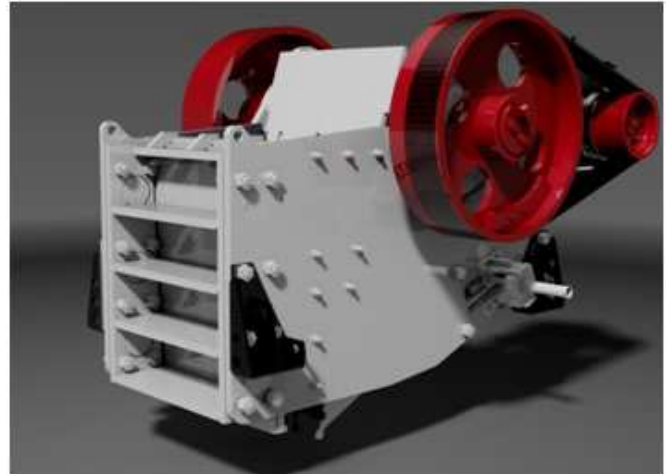


GJW series mobile units are the result of an international collaboration of the design team. Years of experience has allowed engineers to construct a modern, competitively priced and inexpensive to operate units.

PARAMETERS

Jaw Crushers GJ :

As a result of modern and cost-efficient in operation GJ Series crushers mobile sets are efficient and very reliable in operation.



Pan/Grizzly Feeder PG :

Vibratory Pan/Grizzly Feeder provides pre-screening, which increases the efficiency of the entire system

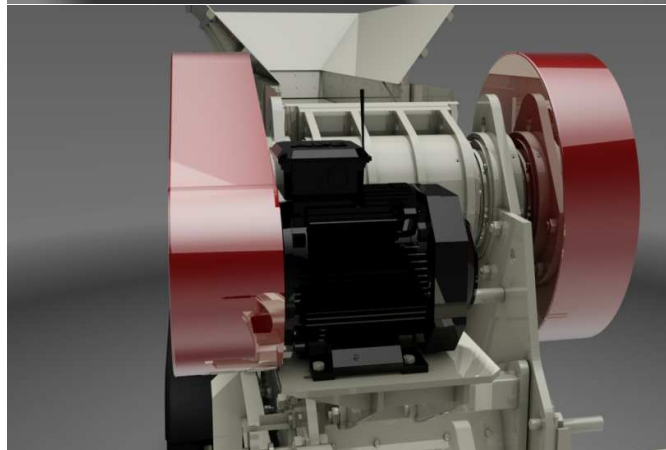


Drive/Controls :

There are electric or diesel engine options available. System is equipped with an overload controller that turns off the feeder at in case of overload.

Tramp Metal Magnet :

Tramp metal magnet is a part of the circuit to prevent damage to the crusher.



Longer time between overhauls:

New design solutions and materials used in construction contribute to increased component life and reduced weight of the machine.

Spare parts are designed in such a way that they can be easily replaced with small lifting devices.

TECHNICAL DATA :

Jaw Crusher	Feed Size [mm]	Gap [mm]	Capacity [t/h]	Power [kW]	Weight [kg]
GJW-3	300x200	6-30	do 20	20	3000
GJW-6	600x300	20-70	do 80	40	7000
GJW-7	700x400	40-110	do 140	60	14000
GJW-8	800x500	50-125	do 200	80	17000
GJW-9	900x600	75-150	do 300	90	21000

Capacity for 2,6 t/m³