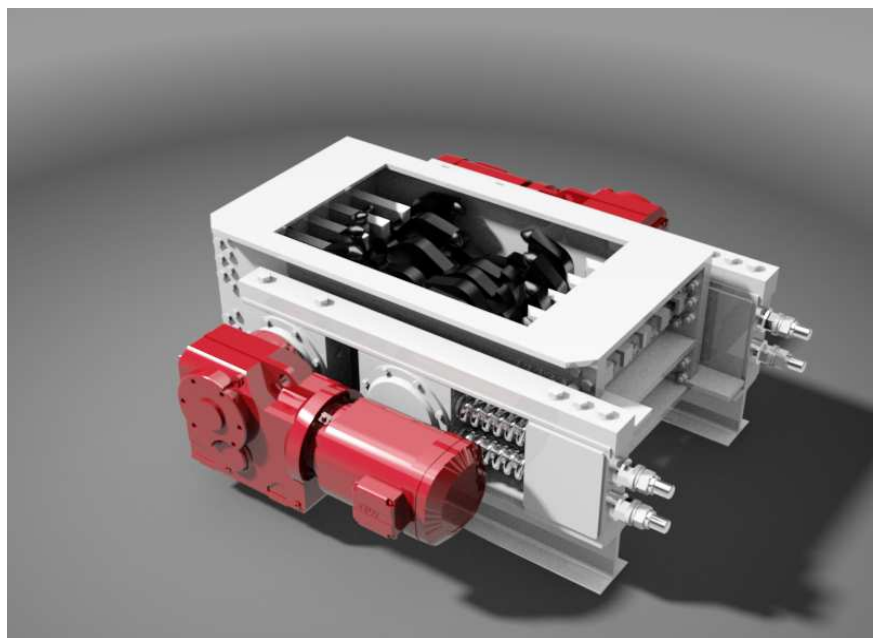
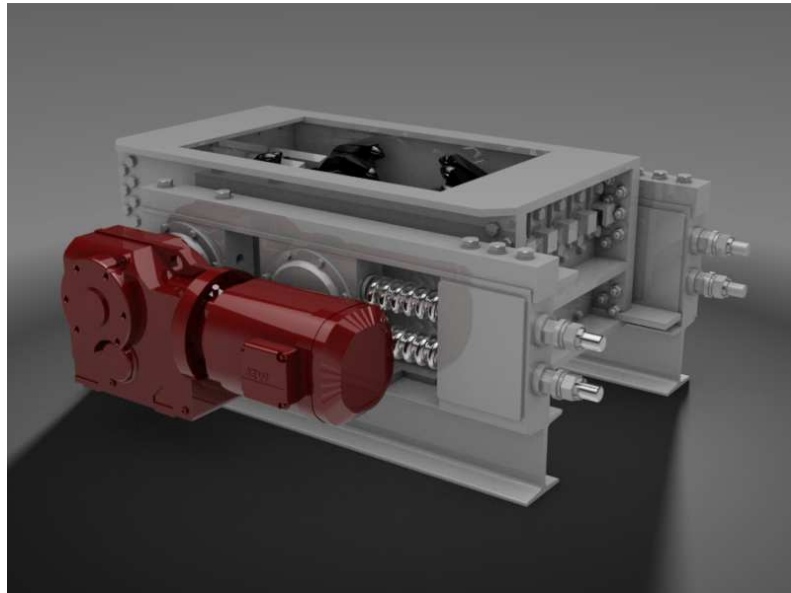


**CRUSHER SIZER  
SERIES GS**

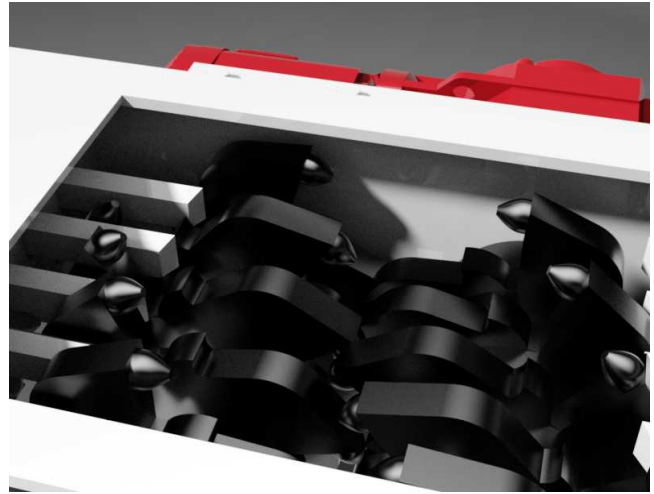


Crushers GS are used for crushing soft to medium hard materials, such as limestone, marl, coal, gypsum, sulfur ore, chalk, salt, fertilizer, glass, etc.

## ADVANTAGES:

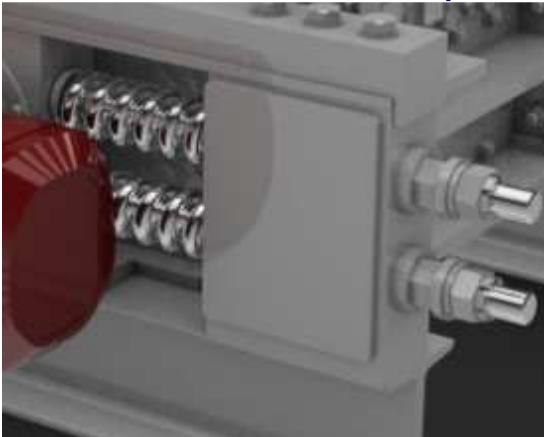
### Performance:

With the big diameter of rolls and the right shape of the teeth combined with a low speed it is possible to crush large-sized particles with with a small size crusher. Bottom breaker used to improve product quality and protect the conveyor belt from the direct impact of the product.



### Modular design

Modular design allows to install the machine in tight spaces and therefore reducing the costs associated with the transportation and installation of the crusher.



### The overload protection, gap adjustment:

Thanks to the two security systems, mechanical or hydraulic and electrical - plant is protected against overloads and materials that can not be crushed and tramp metal.

There is an option of using two systems interchangeably for gap control; hydraulic - automatically controlled from the control room and manual.

## Assembly and disassembly:

Many years of experience in the construction, maintenance and repair of crushers helped to design crushers that are easier to assemble and disassemble than competitors' machines.



## Longer time between overhauls:

New design solutions and materials used in GJ crushers construction contribute to increased component life and reduced weight of the machine.

Oversized bearings allow for longer trouble-free operation of crushers.

Replaceable crusher teeth, which significantly affect the cost of its operation.



**TECHNICAL SPECIFICATION :****CRUSHER-SIZER**

Crusher	Roll Diameter [mm]	Gap [mm]	Max Feed Size [mm]	Capacity [m <sup>3</sup> /h]	Power [kW]	Weight [kg]
GS-455	Ø450x500	30-70	280	Up to 30	2x5,5	2000
GS-458	Ø450x800	30-70	280	Up to 45	2x7,5	2500
GS-556	Ø550x600	30-70	380	Up to 50	2x7,5	2650
GS-5510	Ø550x1000	30-70	380	Up to 70	2x11	3500